

Verso Construction Board

Verso Construction Board is manufactured from Finnish, planed spruce. The precision-sawn surface improves the adhesion of the surface treatment agent and adds friction in inclined installations. The sustainably manufactured Verso Construction Board makes both construction and installation work faster. The most common use is in bitumen roofing installed under a roof, but the plate-like structure makes Verso Construction Board a good fit also for applications such as packaging, concrete formwork and temporary structures, including construction site fences, shelves and wall structures for small yard buildings.



- WOOD TYPE:** Norway spruce (*Picea abies*)
- THICKNESS:** 20 mm
- WIDTH:** 540 mm
- LENGTH OPTIONS:** 2,400 mm / 4,200 mm / 4,800 mm
- SURFACE:** precision-sawn
- MOISTURE CONTENT:** 18% ± 2%
- WEIGHT:** approx. 450 kg/m³
- SURFACE TREATMENT:** Plain wood finish
- PACKAGING:** plastic on five sides
- FASTENING:** Nails or screws to all supports, minimum 2 pcs per individual board; nail or screw minimum length 60 mm; material either galvanised or stainless steel.

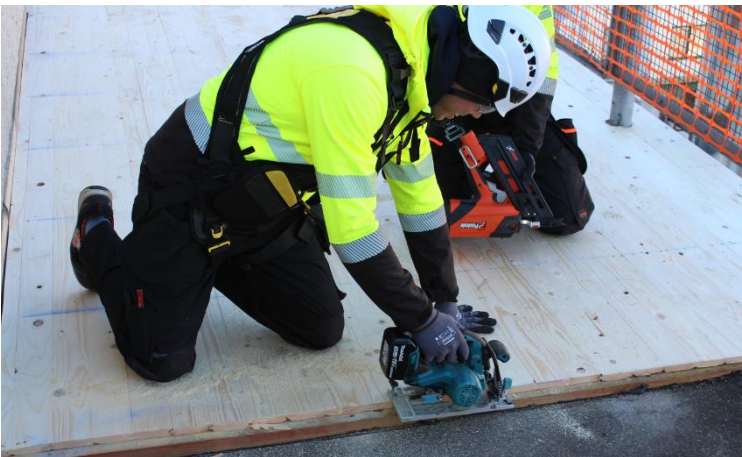


Versowood Oy, Sahatie 1, 19110 Vierumäki, Finland www.versowood.com, tel. +358 10 8425 100

Versowood's annual turnover is approximately EUR 650 million, and we employ a total of around 900 people in our 13 units in Finland and one unit in Estonia. Versowood produces approximately 1.5 million m³ of sawn timber annually. In addition, the company manufactures various kinds of downstream sawn timber products, such as planed, painted and impregnated products, glulam products and glulam structures, telephone transmission line supports and electricity transmission line supports, wooden bridges, noise barriers, various kinds of wood packaging as well as forest energy and wood pellets.

Wood is an organic material that is sensitive to moisture and can get damaged due to improper storage, for example. Carefully plan the deliveries and the storage location of the wood on the construction site. Protect the wood materials from long rain exposure and soil moisture both during the warehousing and installation. Store the wood materials in an aerated place and make sure that moisture is not trapped under the protective covers.

Weight-bearing structures manufactured from wood must always be dimensioned by an experienced building designer.



Versowood Oy, Sahatie 1, 19110 Vierumäki, Finland www.versowood.com, tel. +358 10 8425 100

Versowood's annual turnover is approximately EUR 650 million, and we employ a total of around 900 people in our 13 units in Finland and one unit in Estonia. Versowood produces approximately 1.5 million m³ of sawn timber annually. In addition, the company manufactures various kinds of downstream sawn timber products, such as planed, painted and impregnated products, glulam products and glulam structures, telephone transmission line supports and electricity transmission line supports, wooden bridges, noise barriers, various kinds of wood packaging as well as forest energy and wood pellets.